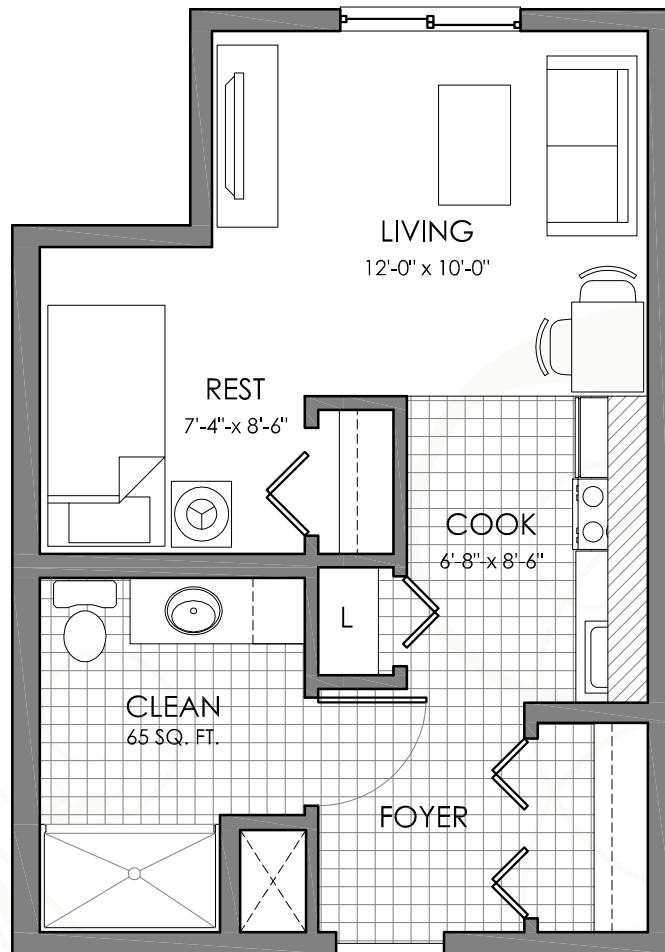


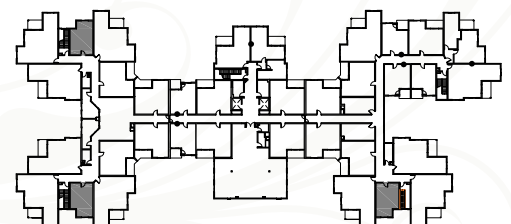
ALLENDALE

STUDIO | 431 SQ FT



The developer reserves the right to modify floor plans, site plans, renderings, elevations, common areas, and features in a continuing effort to improve product quality.

07.21.11



SECOND, THIRD & FOURTH FLOORS ONLY

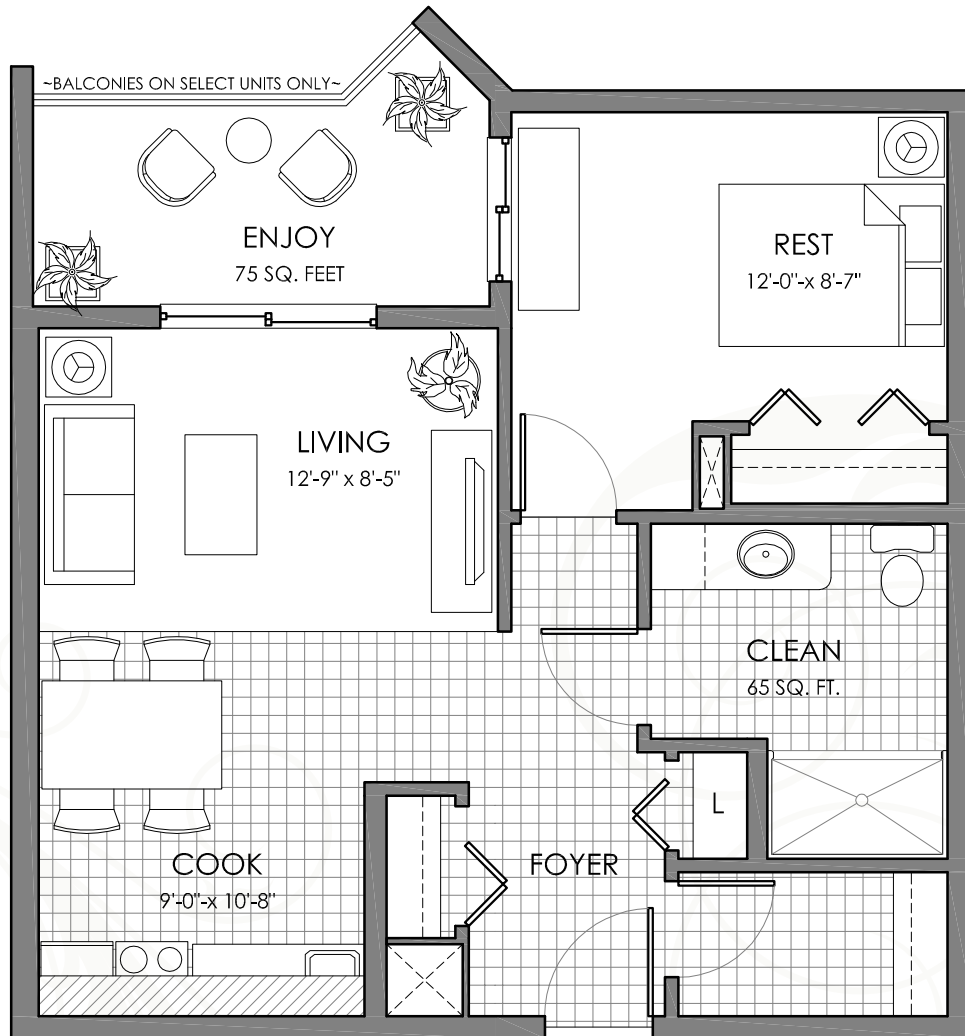
WHITEMUD

4069 - 106 Street
Edmonton, Alberta
T6J 2S3

ph: (780) 437.7171
Fax: (780) 437.5551
whitemudsales@lifestyleretirement.ca

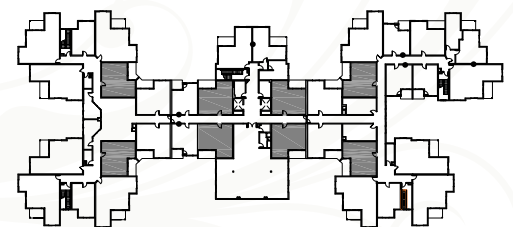
BRAZEAU

ONE BEDROOM | 594 SQ FT



The developer reserves the right to modify floor plans, site plans, renderings, elevations, common areas, and features in a continuing effort to improve product quality.

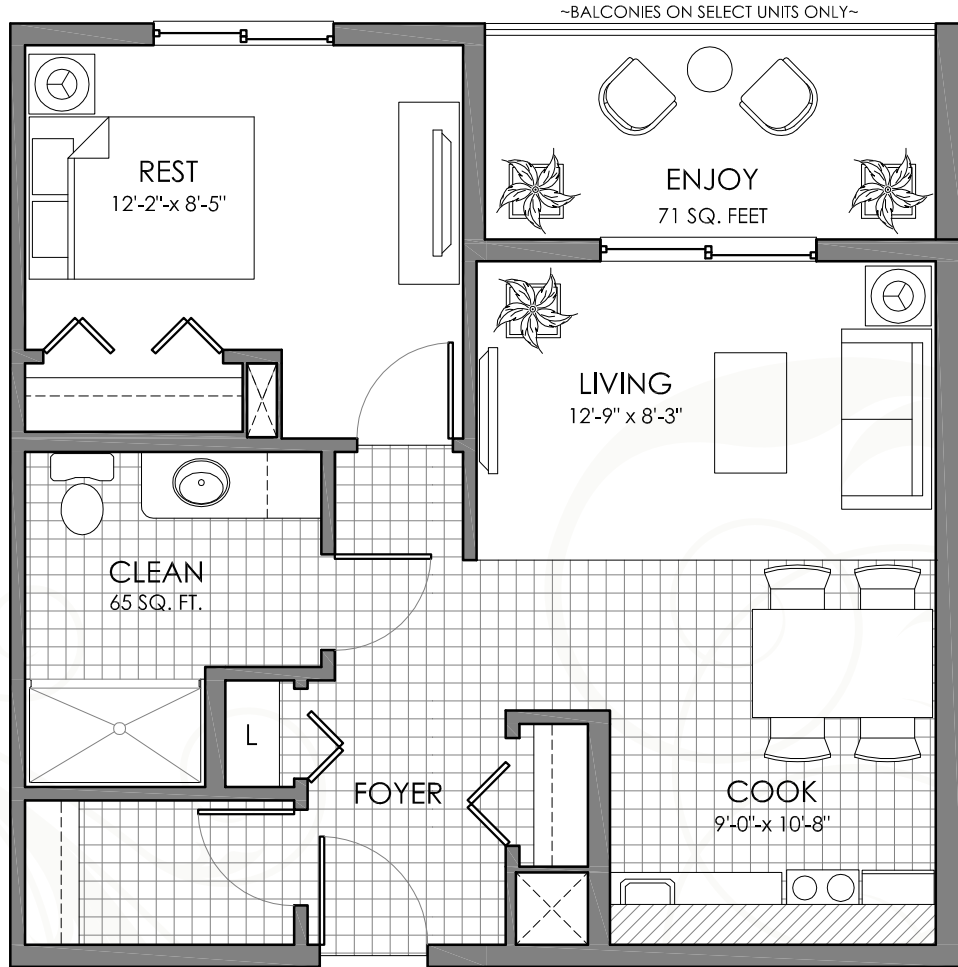
07.21.11



SECOND, THIRD & FOURTH FLOORS ONLY

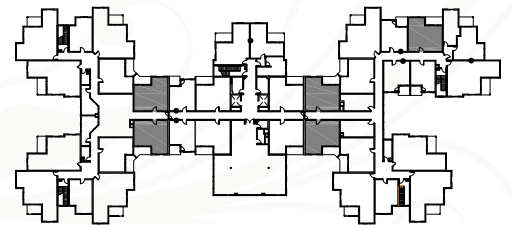
CALDER

ONE BEDROOM | 594 SQ FT



The developer reserves the right to modify floor plans, site plans, renderings, elevations, common areas, and features in a continuing effort to improve product quality.

07.21.11



SECOND, THIRD & FOURTH FLOORS ONLY

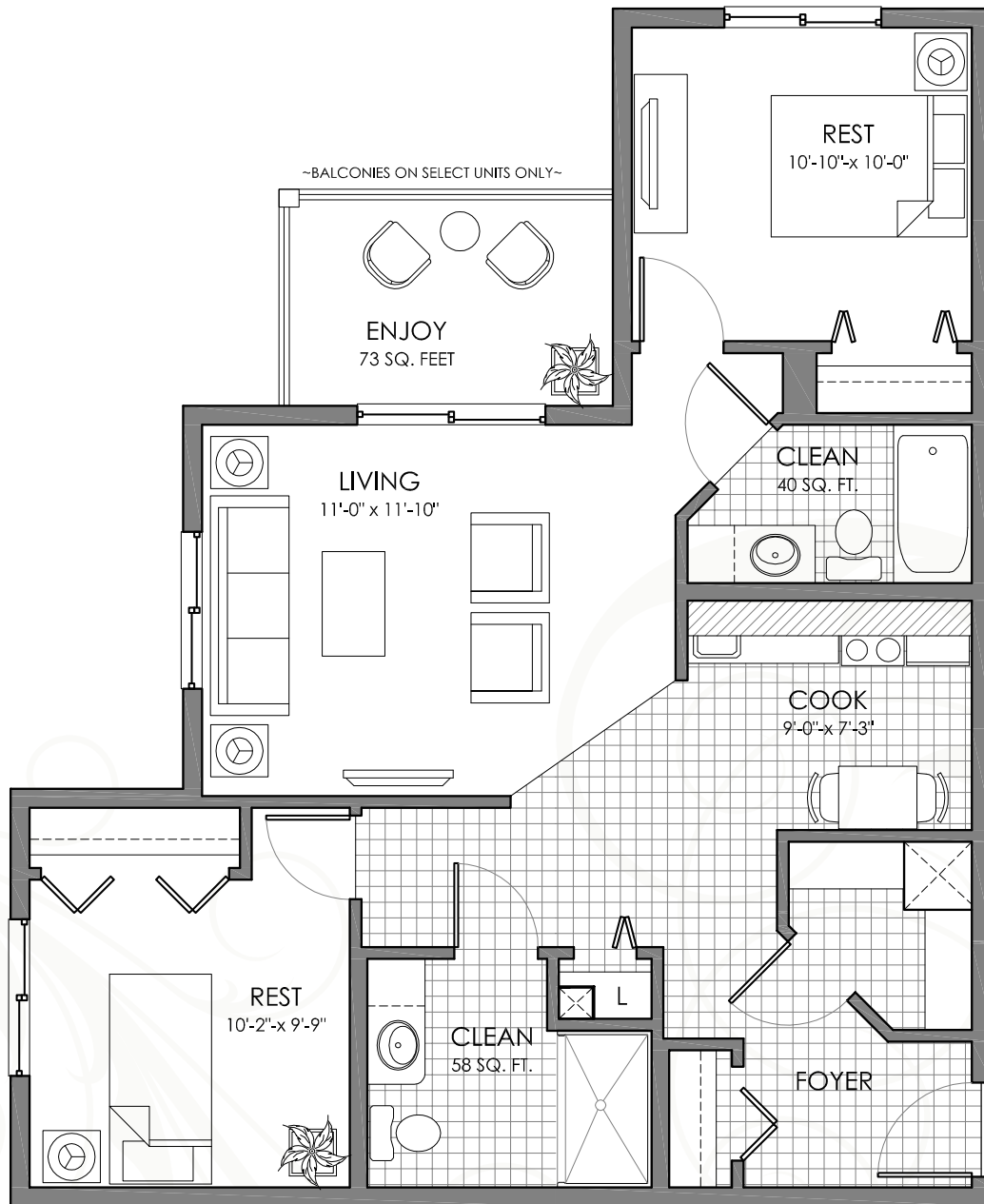
WHITEMUD

4069 - 106 Street
Edmonton, Alberta
T6J 2S3

ph: (780) 437.7171
Fax: (780) 437.5551
whitemudsales@lifestyleretirement.ca

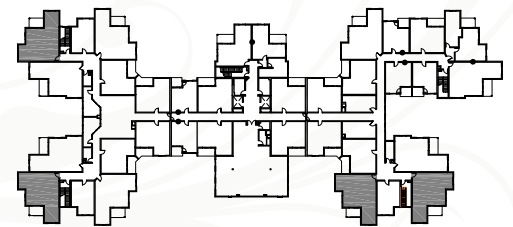
EASTWOOD

TWO BEDROOM | 874 SQ FT



The developer reserves the right to modify floor plans, site plans, renderings, elevations, common areas, and features in a continuing effort to improve product quality.

07.21.11



SECOND, THIRD & FOURTH FLOORS ONLY

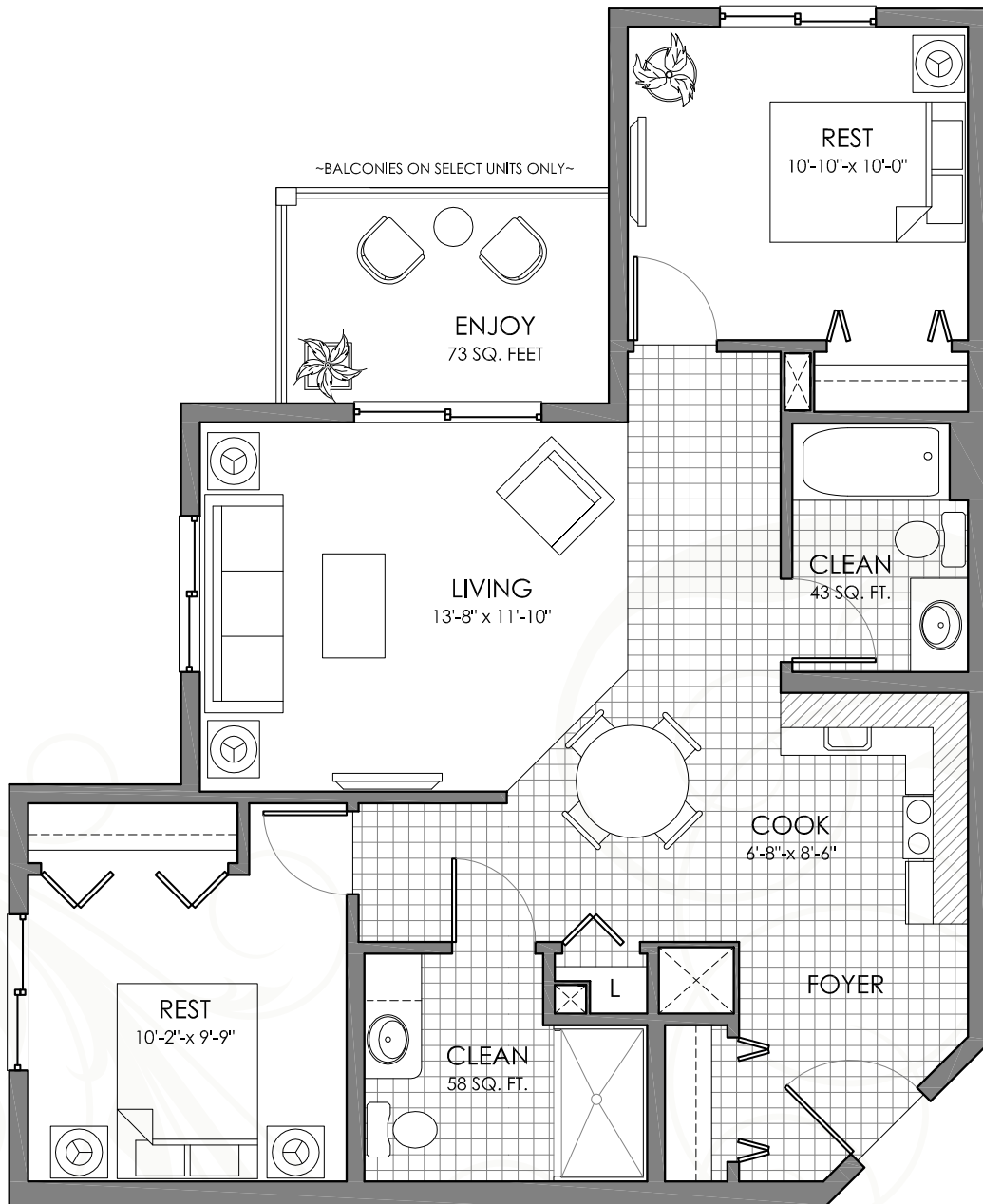
WHITEMUD

4069 - 106 Street
Edmonton, Alberta
T6J 2S3

ph: (780) 437.7171
Fax: (780) 437.5551
whitemudsales@lifestyleretirement.ca

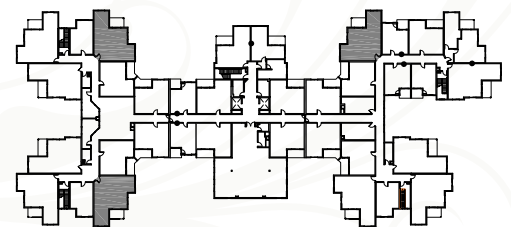
GLENORA

TWO BEDROOM | 861 SQ FT



The developer reserves the right to modify floor plans, site plans, renderings, elevations, common areas, and features in a continuing effort to improve product quality.

07.21.11



SECOND, THIRD & FOURTH FLOORS ONLY

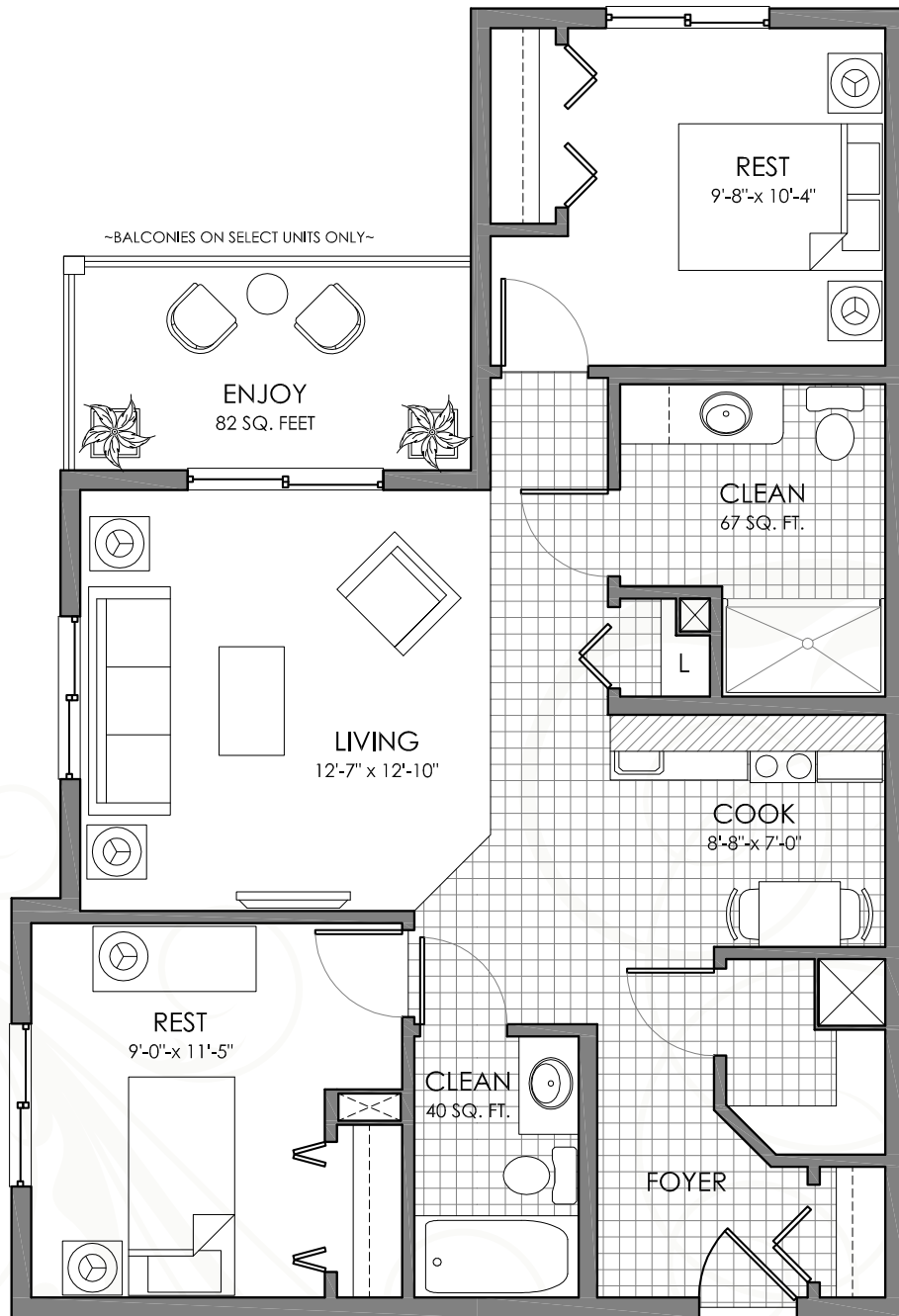
WHITEMUD

4069 - 106 Street
Edmonton, Alberta
T6J 2S3

ph: (780) 437.7171
Fax: (780) 437.5551
whitemudsales@lifestyleretirement.ca

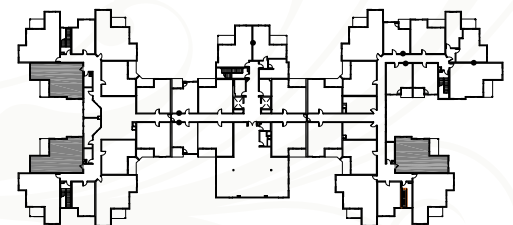
HENDAY

TWO BEDROOM | 859 SQ FT



07.21.11

The developer reserves the right to modify floor plans, site plans, renderings, elevations, common areas, and features in a continuing effort to improve product quality.



SECOND, THIRD & FOURTH FLOORS ONLY

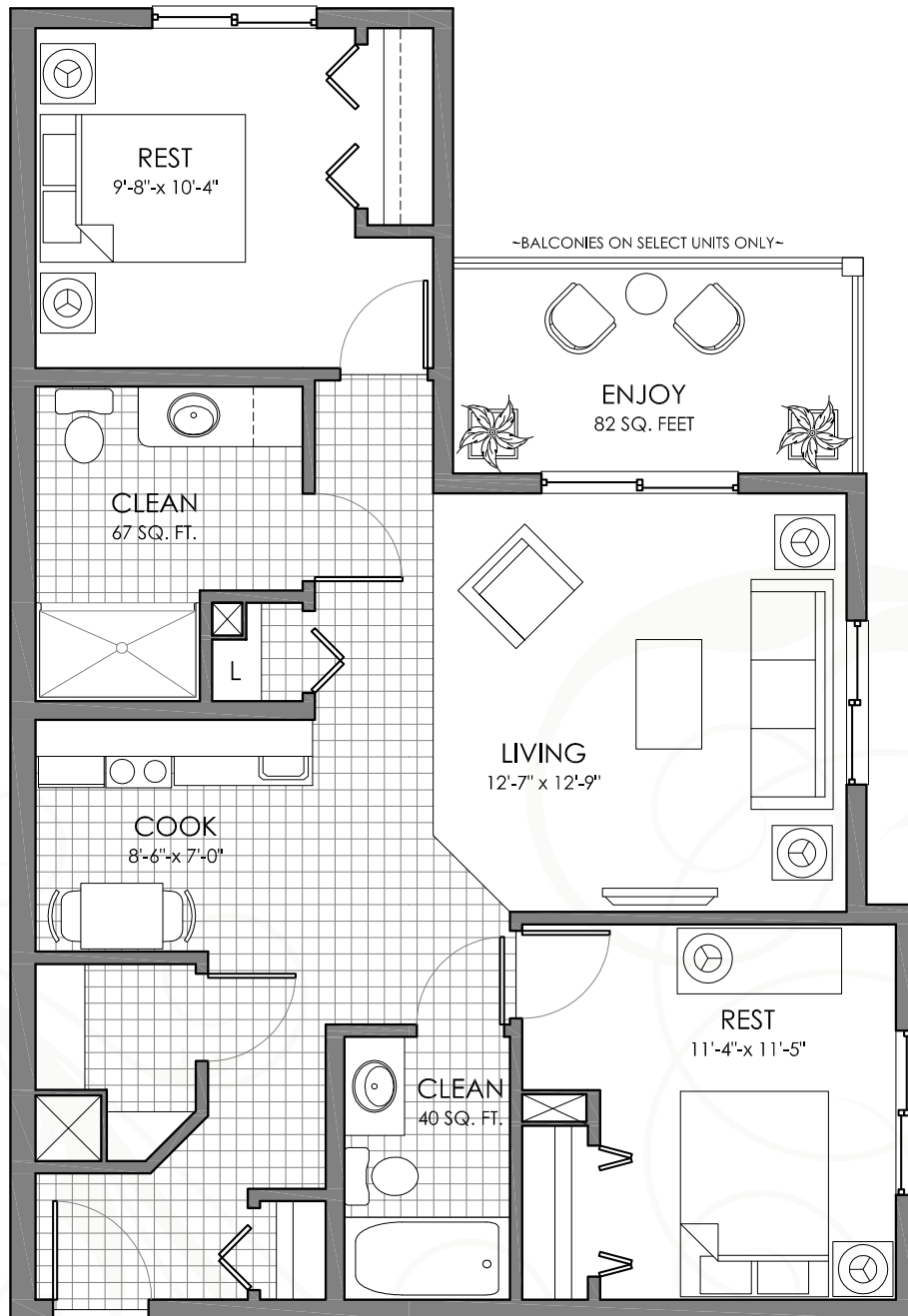
WHITEMUD

4069 - 106 Street
Edmonton, Alberta
T6J 2S3

ph: (780) 437.7171
Fax: (780) 437.5551
whitemudsales@lifestyleretirement.ca

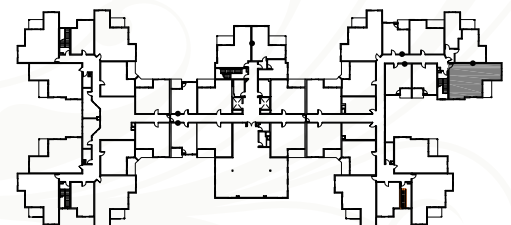
JASPER

TWO BEDROOM | 862 SQ FT



The developer reserves the right to modify floor plans, site plans, renderings, elevations, common areas, and features in a continuing effort to improve product quality.

07.21.11



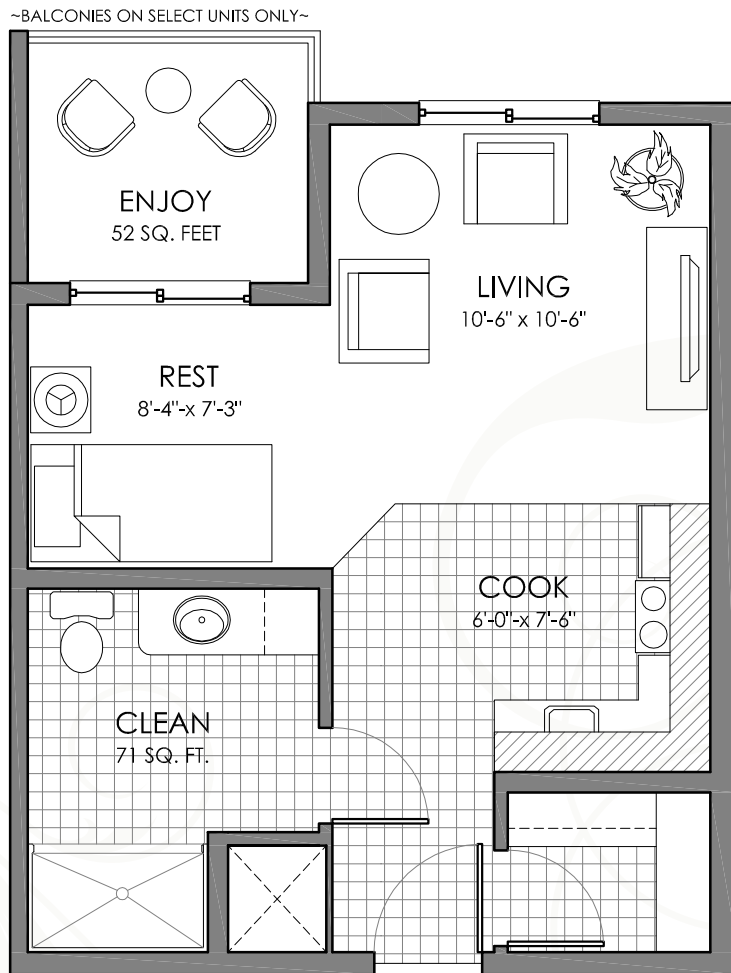
WHITEMUD

4069 - 106 Street
Edmonton, Alberta
T6J 2S3

ph: (780) 437.7171
Fax: (780) 437.5551
whitemudsales@lifestyleretirement.ca

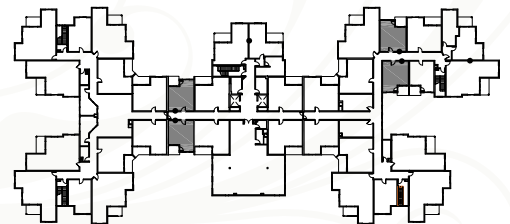
LACOMBE

STUDIO | 437 SQ FT



The developer reserves the right to modify floor plans, site plans, renderings, elevations, common areas, and features in a continuing effort to improve product quality.

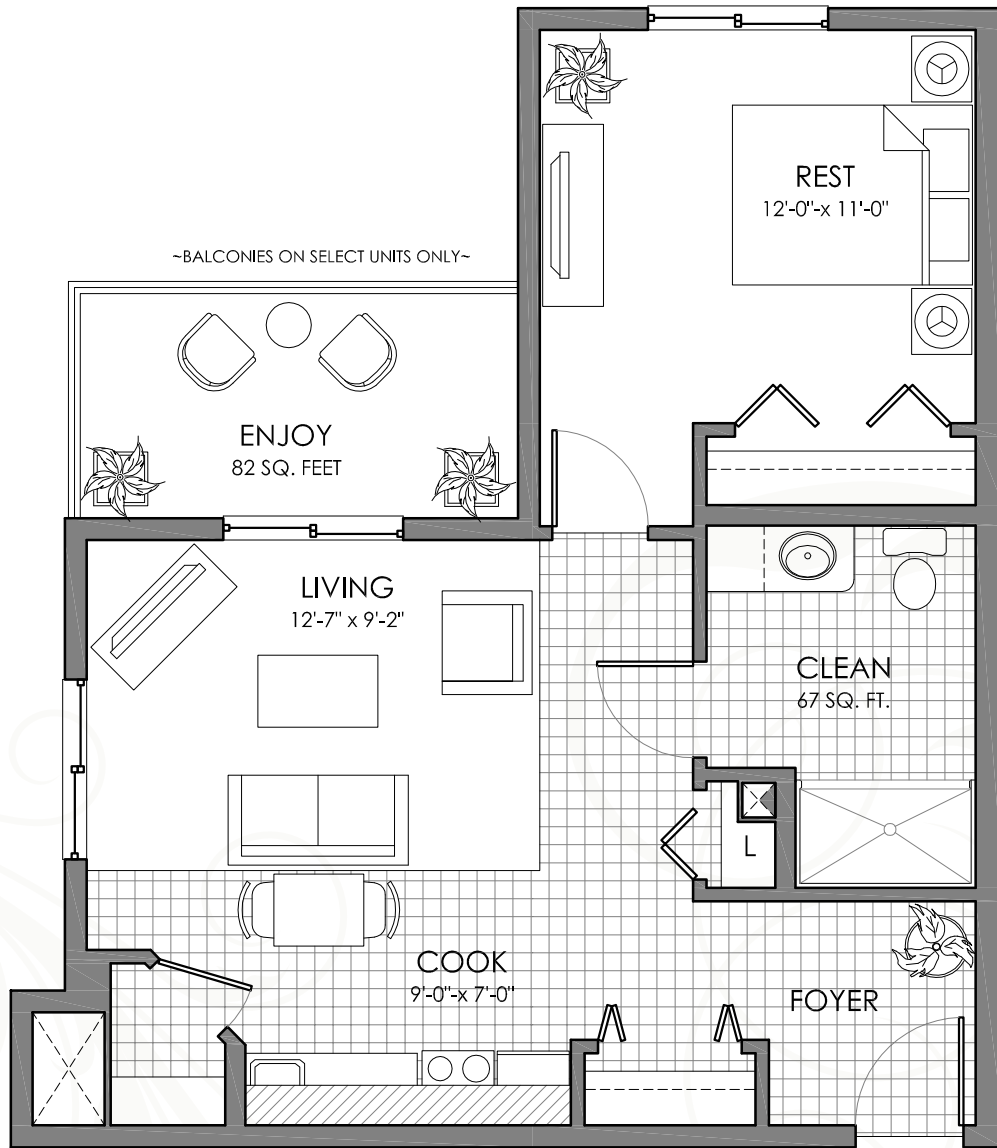
07.21.11



SECOND, THIRD & FOURTH FLOORS ONLY

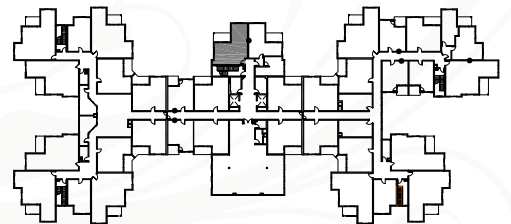
MACEWAN

ONE BEDROOM | 632 SQ FT



The developer reserves the right to modify floor plans, site plans, renderings, elevations, common areas, and features in a continuing effort to improve product quality.

08.15.11



SECOND, THIRD & FOURTH FLOORS ONLY

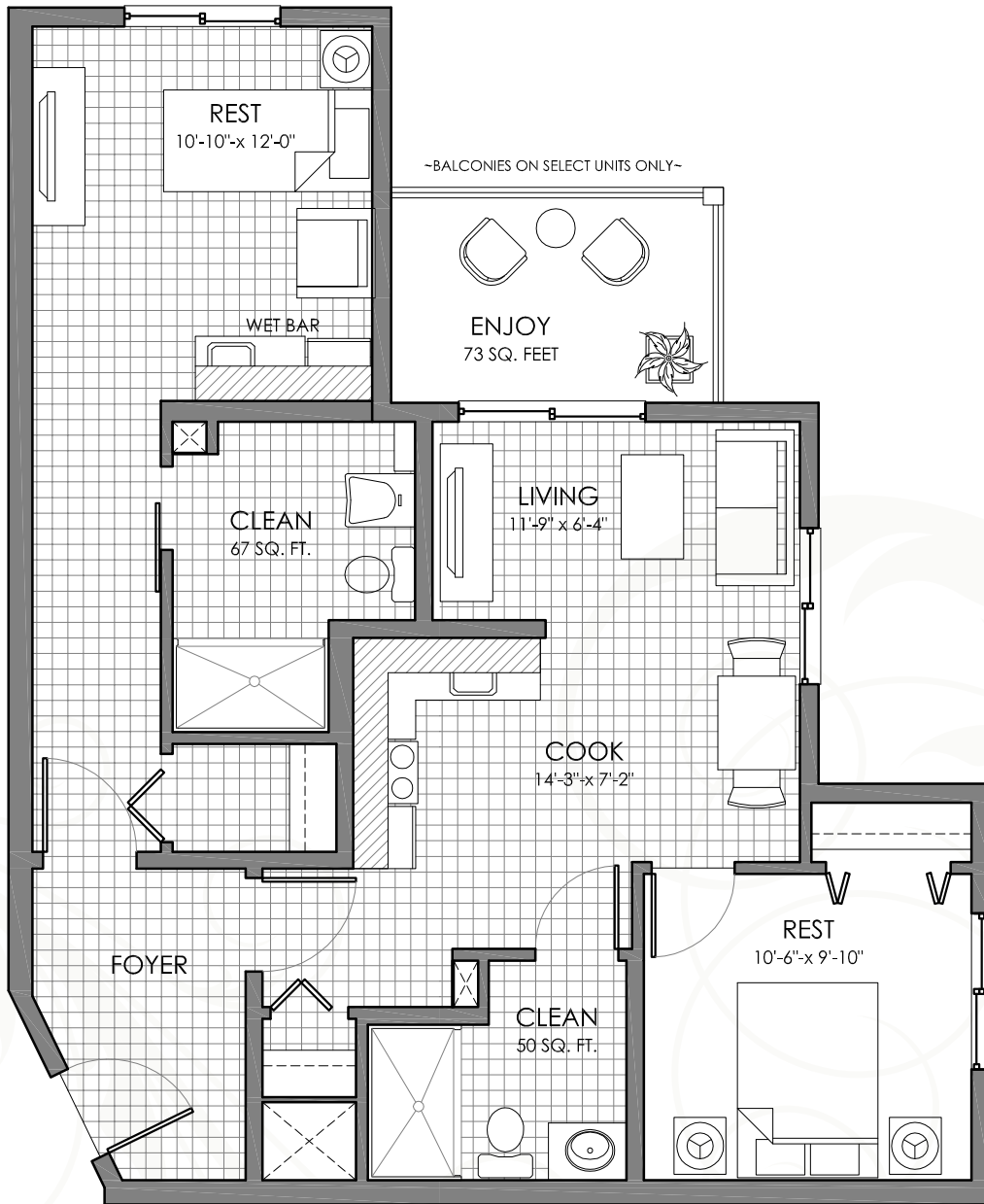
WHITEMUD

4069 - 106 Street
Edmonton, Alberta
T6J 2S3

ph: (780) 437.7171
Fax: (780) 437.5551
whitemudsales@lifestyleretirement.ca

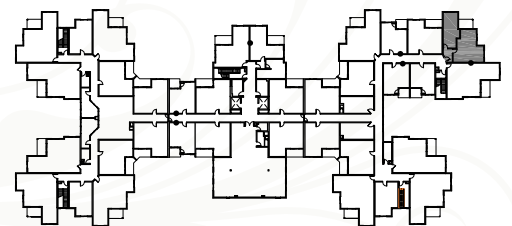
RIVERDALE

TWO BEDROOM | 863 SQ FT



The developer reserves the right to modify floor plans, site plans, renderings, elevations, common areas, and features in a continuing effort to improve product quality.

08.15.11



SECOND, THIRD & FOURTH FLOORS ONLY

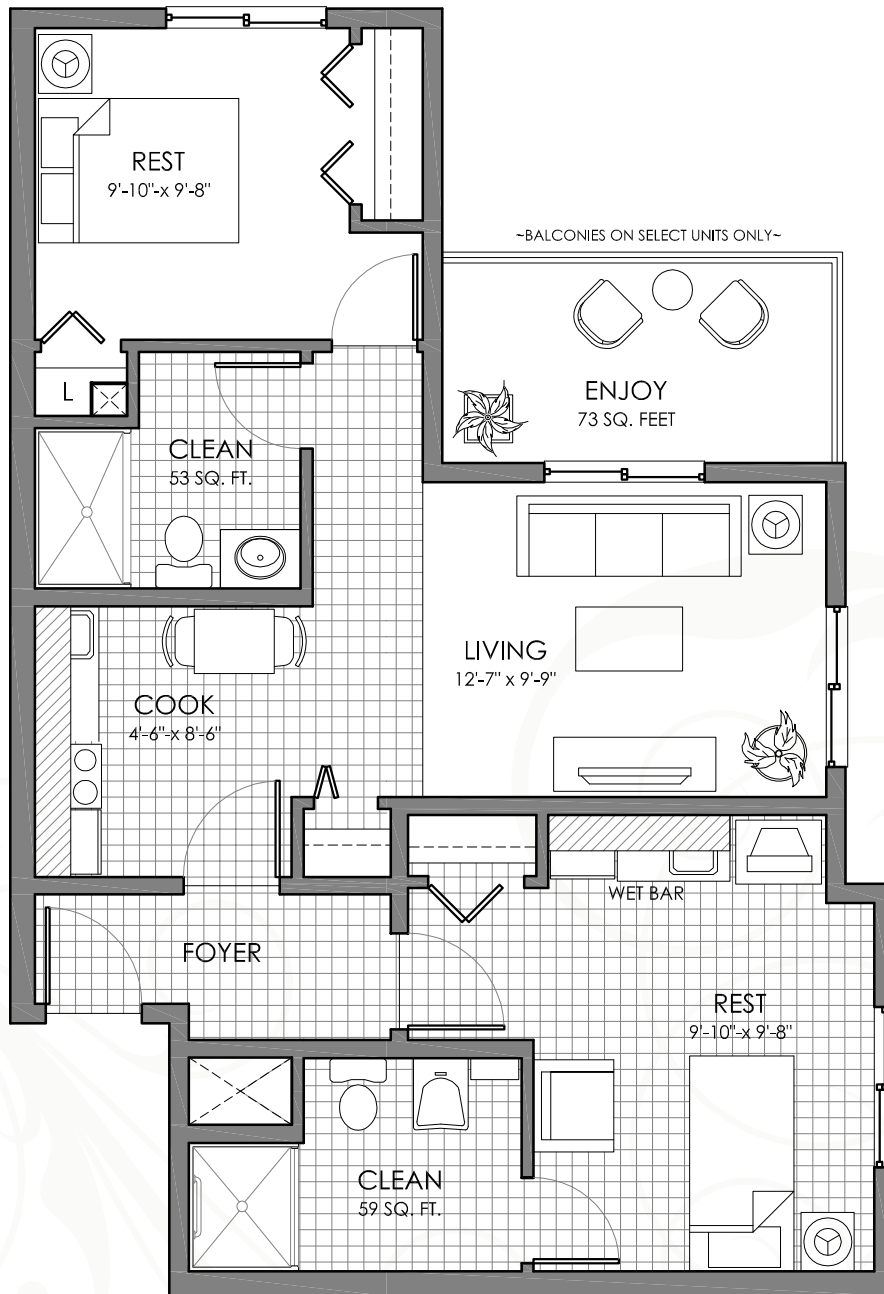
WHITEMUD

4069 - 106 Street
Edmonton, Alberta
T6J 2S3

ph: (780) 437.7171
Fax: (780) 437.5551
whitemudsales@lifestyleretirement.ca

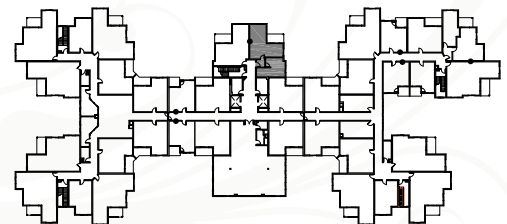
STRATHCONA

TWO BEDROOM | 820 SQ FT



The developer reserves the right to modify floor plans, site plans, renderings, elevations, common areas, and features in a continuing effort to improve product quality.

08.15.11



SECOND, THIRD & FOURTH FLOORS ONLY

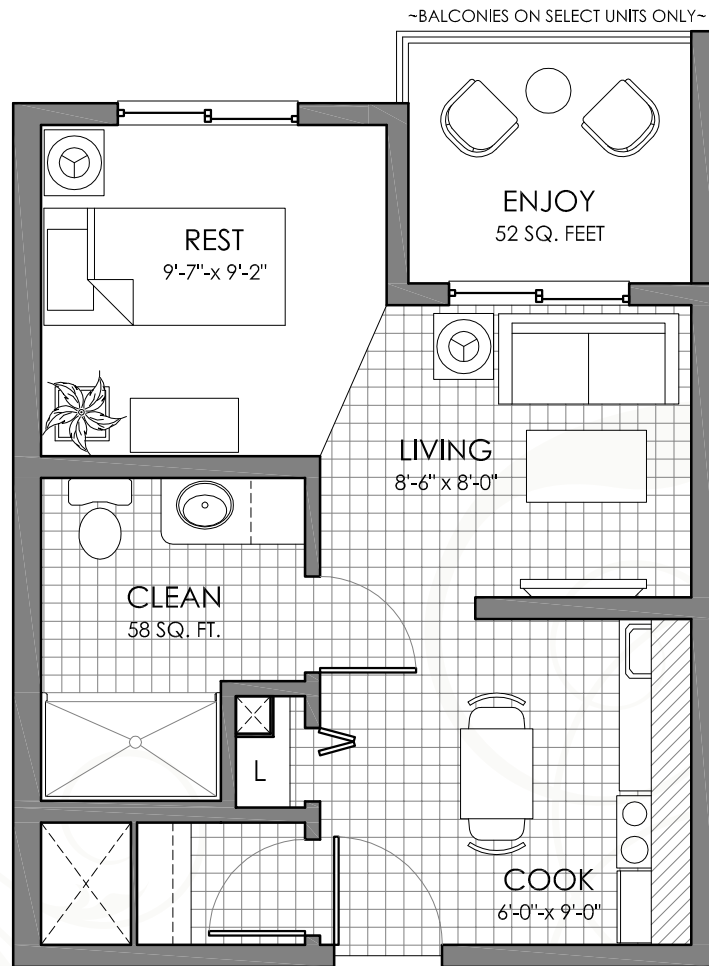
WHITEMUD

4069 - 106 Street
Edmonton, Alberta
T6J 2S3

ph: (780) 437.7171
Fax: (780) 437.5551
whitemudsales@lifestyleretirement.ca

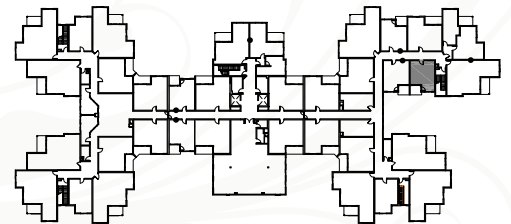
WESTMOUNT

STUDIO | 404 SQ FT



The developer reserves the right to modify floor plans, site plans, renderings, elevations, common areas, and features in a continuing effort to improve product quality.

08.15.11



SECOND, THIRD & FOURTH FLOORS ONLY

WHITEMUD

4069 - 106 Street
Edmonton, Alberta
T6J 2S3

ph: (780) 437.7171
Fax: (780) 437.5551
whitemudsales@lifestyleretirement.ca